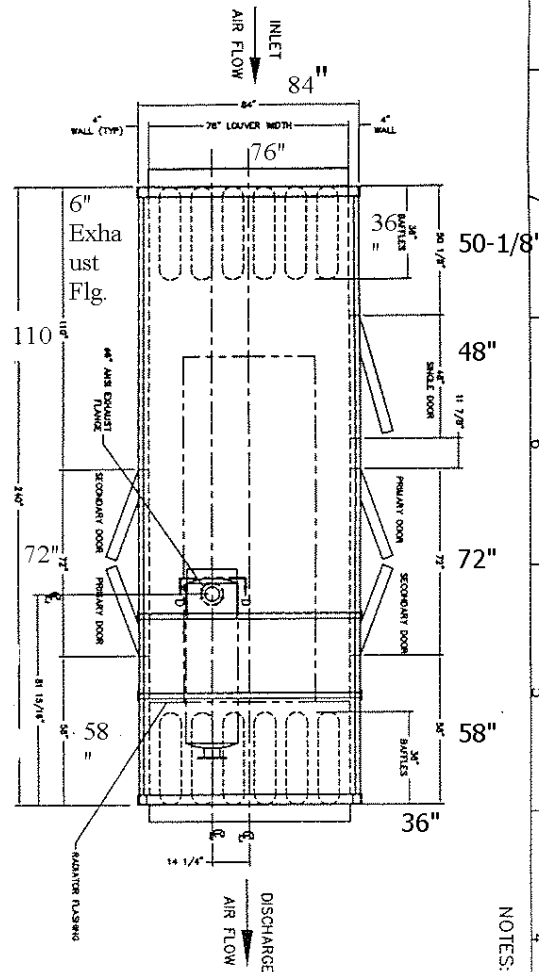
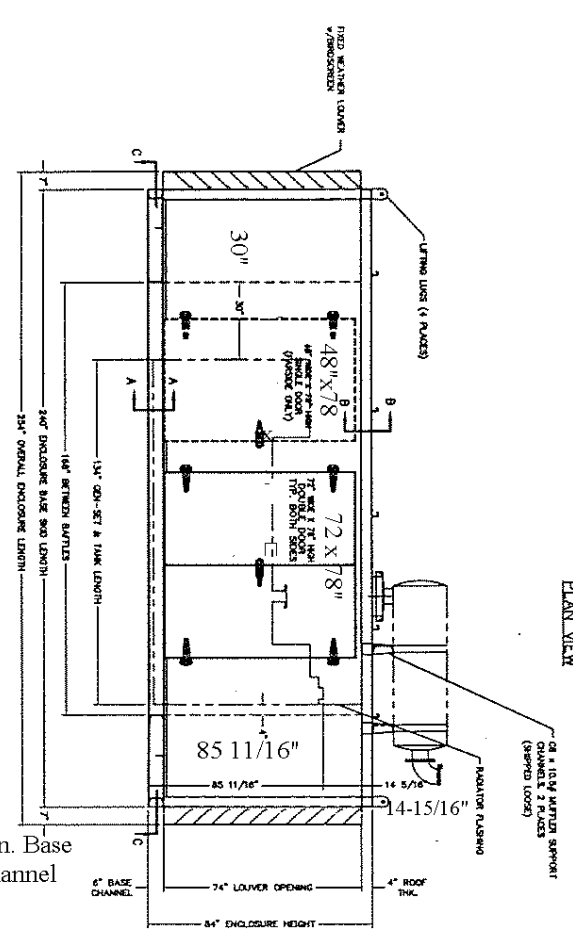


84" Wide
78" Louver Width
4" Wall



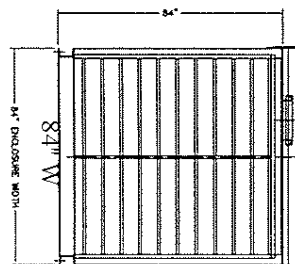
PLAN VIEW



SIDE ELEVATION

168" between Baffles
240" Enclosure Base Length
254" Overall Enclosure Length

74" Louver Opening
84" Enclosure Height



END VIEW

NOTES:

1. ENCLOSURE ASSEMBLY.
 - a.) FOR A QUANT 250 DPC GEN-SET.
 - b.) FULLY ASSEMBLED DROP OVER TYPE ENCLOSURE TO BE ANCHORED TO THE FUEL TANK.
 - c.) FUEL JOINTS ARE SKIP WELDED AND CHECKED.
2. ENCLOSURE CONSTRUCTION.
 - a.) SKIN - 14 GA. GALVANIZED STEEL (VALLEY).
 - b.) FRAMING - A36 STRUCTURAL CHANNEL 1.850-8 TUBING.
 - c.) INNER LINER - PERFORATED SHEETMETAL BY A 2 MIL. HEAR CONCRETE.
 - d.) DOORS - ONE (1) SINGLE AND (2) LOCK ACCESS SERVICE DOORS WITH CHROME PLATED HINGES & CHROME PLATED REFRIGERATOR DOOR LATCH.
 - e.) ONE (1) INLET & ONE (1) DISCHARGE FIXED WEATHER LOUVER (GALVANIZED CONST.).
 - f.) 36 DEEP INLET & DISCHARGE BATTLE PANELS - GALVANIZED CONSTRUCTION.
 - g.) BOLLING HARDWARE - STAINLESS STEEL.
3. DESIGN CONSTRUCTION.
 - a.) AIR FLOW RATES:
 - i.) RADIATOR - 13,320 CFM
 - ii.) CONSTRUCTION - 665 CFM
 - b.) FUEL TANK DISCHARGE LOUVERS/BATTLES 0.5" H.G. OR LESS (TOTAL).
 - c.) PERFORMANCE:
 - i.) DESIGNED TO REDUCE THE GEN-SET EQUIPMENTS NOISE LEVEL TO 68 OR 72 dba WHEN MEASURED AT A DISTANCE OF 21 FEET FROM THE ENCLOSURE (PROVIDING THE EQUIPMENT NOISE DOES NOT EXCEED 105 dba AT 3 FEET.)
4. PAINTING.
 - a.) ALL EXTERIOR GALVANIZED SURFACES TO BE CLEANED AND PAINTED AS FOLLOWS:
 - PRIMER - INDUSTRIAL WASH PRIMER (1-1.5 MILS DFT).
 - INTERMEDIATE - ONE COAT SHERWIN WILLIAMS POLYME POLY (1-1.5 MILS DFT).
 - FINISH - ONE COAT SHERWIN WILLIAMS POLYME POLY (1-1.5 MILS DFT).
 - b.) ALL INTERIOR SURFACES TO BE CLEANED AND PAINTED AS FOLLOWS:
 - PRIMER - ONE COAT SHERWIN WILLIAMS POLYME POLY (1-1.5 MILS DFT).
 - INTERMEDIATE - ONE COAT SHERWIN WILLIAMS POLYME POLY (1-1.5 MILS DFT).
 - FINISH - ONE COAT SHERWIN WILLIAMS POLYME POLY (1-1.5 MILS DFT).
 - c.) COLOR - OMAN GREEN.
5. QUANTITY REQUIRED.
 - a.) GEN-SET ENCLOSURE ASSEMBLY AS SHOWN.
 - b.) SEVEN (7) GEN-SET ENCLOSURE ASSEMBLY AS SHOWN.
 - c.) ESTIMATED WEIGHT 5,450 POUNDS.

* CUSTOMER TO VERIFY OR PROVIDE ALL DIMENSIONS & NOTES

PROPRIETARY NOTICE
THIS DOCUMENT IS THE PROPERTY OF AUST SYSTEMS, INC. AND IS NOT TO BE REPRODUCED, COPIED, OR TRANSMITTED IN ANY FORM OR BY ANY MEANS, ELECTRONIC OR MECHANICAL, INCLUDING PHOTOCOPYING, RECORDING, OR BY ANY INFORMATION STORAGE AND RETRIEVAL SYSTEM, WITHOUT THE WRITTEN PERMISSION OF AUST SYSTEMS, INC.

REV	ECO NUMBER	CHANGES PER CUSTOMER REQUEST	BY	DATE
A				

AUS INC.

ACOUSTICAL CONTROL SYSTEMS, INC.
125 S. W. 14th Ave., Suite 100
Fort Lauderdale, FL 33304
Tel: (305) 447-1111
Fax: (305) 447-1112
E-mail: aus@ausinc.com
www.ausinc.com

PROJECT: PF-101
ENCLOSURE NUMBER: 10316-10
DATE: 9-11-01
SCALE: 1/8" = 1'-0"
SHEET NO.: 1 of 2